



BIO-SOLIDS



BIO-WASTE



BIO-REFINERIES

PLANT
SHEETS

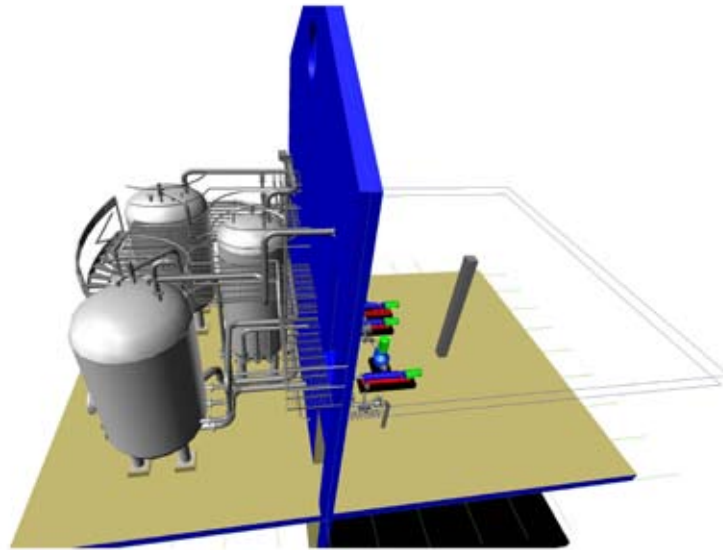


NÆSTVED PLANT

Næstved, Denmark

Plant capacity and performance:

- 1.600 metric tonnes DS/year
- 2000 m³ digesters
- Bio-sludge (extended aeration)
- From 18% to 30% DS biosolids
- Biosolids reduction by 50%
- > 50% more biogas



Næstved plant

The Cambi THP Næstved Plant is located about 90 km south of Copenhagen, owned by the Municipality of Næstved.

It is designed to treat 1,600 tonnes of dry solids (DS) annually of municipal sludge.

The Næstved WWTP changed to biological treatment in 2000 when the primary tank was bypassed as a method of reducing organic micro pollutants levels in the sludge.

The sludge was therefore of a highly biological nature (extended aeration sludge) and very difficult to digest and to dewater.

Cambi THP has doubled the digestibility and the dewaterability of the sludge and has led to a reduction in half of the biosolids to be transported out of the plant. The increased biogas production and the enhanced flexibility and safety are other benefits.

The benefits of the Cambi process are:

- 50% VS destruction
- 30% cake solids in the final product
- Product that meets Danish regulations for pasteurised sludge
- Significant reduction in volume of sludge for disposal
- Destruction of Microthrix organisms that can cause foaming